



PATTERN COLLECTION

Women



Cygnus Top

Designed by Afifa Sayeed

SKILL

Knitting

DIFFICULTY

Intermediate

SIZES

Extra Small (Small, Medium, Large, 1X) (2X, 3X, 4X, 5X)

Shown in Small size with approx. 2" of positive ease at the waist.

FINISHED MEASUREMENTS

Note: See Pattern Notes on selecting a size.

Waist: 24 (28, 32, 36, 40) (44, 48, 52, 56)"

Length: 22½ (22½, 22½, 23¼, 23¼) (23¼, 24, 24, 24)"

MATERIALS

Universal Yarn Constellation (66% organic cotton, 32% polyamide, 2% metallic fiber; 50g/164 yds)

- 101 Andromeda - 4 (5, 5, 6, 6) (7, 8, 9, 9) balls

Needle: US Size 6 (4 mm) 16-40" circular (to accommodate large number of sts) or size needed to obtain gauge

Notions: Tapestry needle, removable stitch markers, stitch marker

GAUGE

20 sts x 32 rows = 4" in Lace Vines patt *after blocking*

Save time, check your gauge.

Knit, Relax, Smile, Repeat!

2024 © Universal Yarn, Inc.

www.universalyarn.com

All rights reserved. This pattern may not be reproduced for business, trade or sale.

Questions? Contact patterns@universalyarn.com

PATTERN NOTES

Cygnus is an airy sleeveless sweater knitted with a lace pattern in our sparkly Constellation yarn. A versatile piece for work and play, layer it over a bandeau or camisole for a warm weather look or a long sleeve top for cooler climes.

This top is knit starting with two identical rectangular panels, worked flat. Each panel incorporates a selvedge with a garter border. The panels are folded in half and overlapped along the front and bottom edges and sewn together using the schematic as a guide. Each side is seamed to create armholes. Stitches are then picked up along the bottom edge of the piece and worked in the round to create a waistband.

Because of the unusual construction of this piece, we suggest choosing a size with a waist circumference that is 4-6" less than your chest circumference.

The Lace Vines pattern is both written and charted for your convenience. Please note that stitch counts fluctuate every row when working the Lace Vines pattern. On RS rows, you will increase one stitch per repeat, and on WS rows you will decrease one stitch per repeat.

STITCH GUIDE

Lace Vines

(begins as a multiple of 8 sts, plus 4)

Row 1 (RS): K2, * yo, k1 tbl, yo, ssk, k5; rep from * to last 2 sts, k2 - 1 st inc'd per rep.

Row 2 (WS): P6, * p2tog tbl, p7; rep from * to last 7 sts, p2tog tbl, p5 - 1 st dec'd per rep.

Row 3: K2, * yo, k1 tbl, yo, k2, ssk, k3; rep from * to last 2 sts, k2 - 1 st inc'd per rep.

Row 4: P4, * p2tog tbl, p7; rep from * to end - 1 st dec'd per rep.

Row 5: K2, * k1 tbl, yo, k4, ssk, k1, yo; rep from * to last 2 sts, k2 - 1 st inc'd per rep.

Row 6: P3, * p2tog tbl, p7; rep from * to last 10 sts, p2tog tbl, purl to end - 1 st dec'd per rep.

Row 7: K7, k2tog, yo, k1 tbl, yo, * k5, k2tog, yo, k1 tbl, yo; rep from * to last 2 sts, k2 - 1 st inc'd per rep.

Row 8: P5, * p2tog, p7; rep from * to last 8 sts, p2tog, purl to end - 1 st dec'd per rep.

Row 9: K5, k2tog, k2, yo, k1 tbl, yo, * k3, k2tog, k2, yo, k1 tbl, yo; rep from * to last 2 sts, k2 - 1 st inc'd per rep.

Row 10: * P7, p2tog; rep from * to last 4 sts, p4 - 1 st dec'd per rep.

Row 11: K2, * yo, k1, k2tog, k4, yo, k1 tbl; rep from * to last 2 sts, k2 - 1 st inc'd per rep.

Row 12: P1, * p7, p2tog; rep from * to last 3 sts, p3 - 1 st dec'd per rep.

Rep Rows 1-12 for patt.

PATTERN BEGINS

TOP

Right Panel

Cast on 50 (58, 66, 74, 82) (90, 98, 106, 114) sts.

Row 1 (RS): K3, pm, work Row 1 of Lace Vines patt to last 3 sts, pm, k2, sl 1 wyif. Patt will be repeated 5 (6, 7, 8, 9) (10, 11, 12, 13) times across each row.

Row 2 (WS): Knit to m, sl m, work Row 2 of Lace Vines patt to m, sl m, k2, sl 1 wyif.

Row 3: Knit to m, sl m, work Row 3 of Lace Vines patt to m, sl m, k2, sl 1 wyif.

Row 4: Knit to m, sl m, work Row 4 of Lace Vines patt to m, sl m, k2, sl 1 wyif.

Rows 5-12: Cont in patt as est'd to end.

Rep Rows 1-12 until piece meas approx. 33 (33, 33, 34½, 34½) (34½, 36, 36, 36)" from cast-on edge, ending with a WS row.

Bind off all sts in kwise.

Left Panel

Work as for Right Panel.

Seam Fronts

Note: The schematic can be helpful in visualizing where to place the markers.

Weave in ends but do not trim. Wet or steam block, stretching to enhance lace. Once piece is fully dry, trim ends close to work.

Place panels parallel, next to each other, with RS facing up. Place removable markers 4 (5, 6, 7, 8) (9, 10, 11, 12)" in from inside edge of each panel along cast-on and bind-off edges. Overlap Right panel over Left panel along cast-on edge, using stitch markers as a guide. Sew pieces together along overlap *only*. Rep for bound-off edge.

Armholes

Place removable markers 7½ (7, 6½, 6¾, 6¼) (5¾, 6, 5½, 5)" from bottom of piece along front and back of each side. Sew side seams, starting at bottom edge, using removable markers as a guide.

Waistband

With RS facing, starting at center back of piece, pick up and knit 160 (182, 204, 226, 248) (270, 292, 314, 336) sts along bottom edge of piece. PM and join to work in the rnd.

Knit, Relax, Smile, Repeat!

2024 © Universal Yarn, Inc.

www.universalyarn.com

All rights reserved. This pattern may not be reproduced for business, trade or sale.

Questions? Contact patterns@universalyarn.com

Rnd 1 (Dec Rnd): K1 (2, 2, 2, 2) (2, 2, 2, 2), [k2tog, k2 (2, 2, 2, 4) (4, 4, 4, 4)], 39 (14, 8, 2, 4) (10, 16, 22, 55) times, [k2tog, k1 (3, 3, 3, 3) (3, 3, 3, 2)], 1 (13, 27, 41, 39) (29, 19, 9, 1) time(s), [k2tog, k- (2, 2, 2, 4) (4, 4, 4, -), - (14, 8, 2, 4) (10, 16, 22, -) times, [k2tog, k- (1, 1, 1, 1) (1, 1, 1, -) - (1, 1, 1, 1) (1, 1, 1, -) time(s); 40 (42, 44, 46, 48) (50, 52, 54, 56) sts dec'd, 120 (140, 160, 180, 200) (220, 240, 260, 280) sts rem.

Rnd 2: Purl.

Rnd 3: Knit.

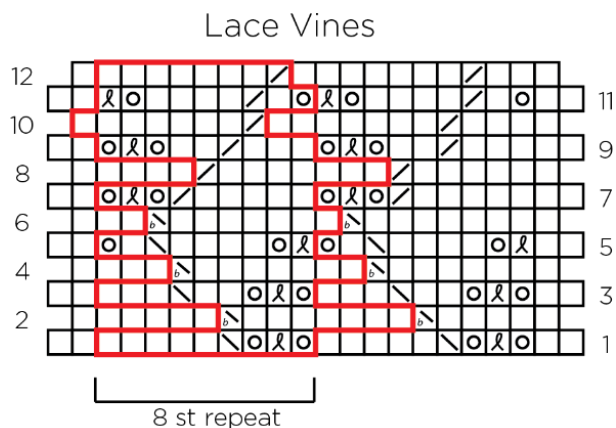
Rep Rnds 2-3 until Waistband meas approx. 6" from picked-up edge. Bind off all sts kwise.

FINISHING

Gently wash and block to finished measurements. Weave in ends.

Abbreviations

*	indicates a repeat section
approx.	approximately
circ	circular
cont	continue
dec('d)	decrease(d)
est'd	established
inc('d)	increase(d)
k	knit
k2tog	knit 2 stitches together (1 st dec'd)
kwise	knitwise
m	marker
ndl	needle
p	purl
p2tog	purl 2 sts together (1 st dec'd)
patt	pattern
pm	place marker
rem	remain(ing)
rep	repeat
rnd(s)	round(s)
RS	right side
ssk	slip next 2 sts individually knitwise, slip them back to left needle in this position, knit them together through the back loops (1 st dec'd)
sl	slip
st(s)	stitch(es)
tbl	through the back loop(s)
WS	wrong side
wyif	with yarn held in front
yo	yarnover



Key

	patt repeat
	knit on RS, purl on WS
	ssk
	p2tog tbl
	k2tog on RS, p2tog on WS
	yo
	k1 tbl

Knit, Relax, Smile, Repeat!

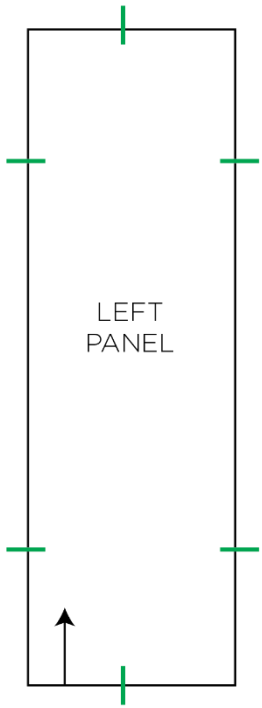
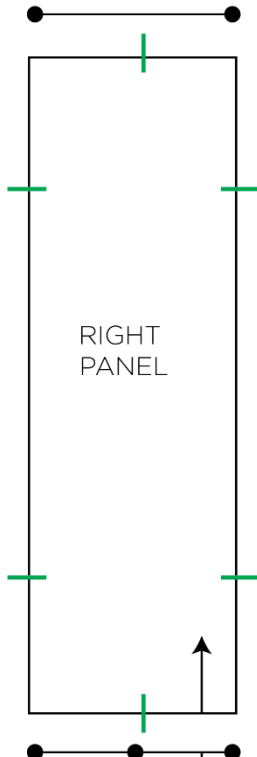
2024 © Universal Yarn, Inc.

www.universalyarn.com

All rights reserved. This pattern may not be reproduced for business, trade or sale.

Questions? Contact patterns@universalyarn.com

10 (11½, 13¼, 14¾, 16½)
(18, 19½, 21¼, 22¾)"



7½ (7, 6½, 6¾, 6¼)
(5¾, 6, 5½, 5)"

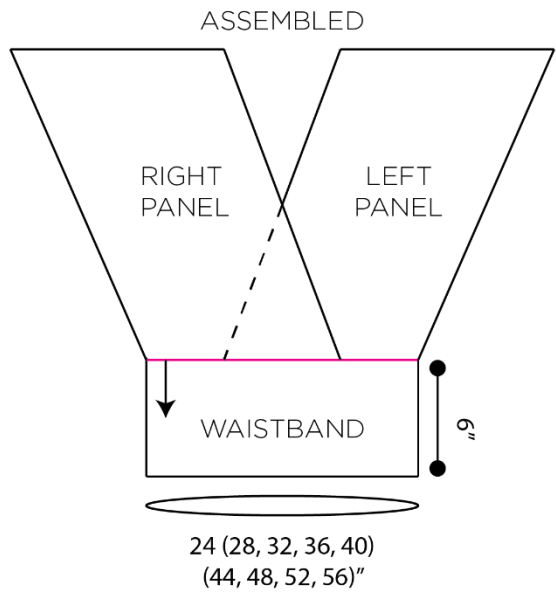
18 (19, 20, 21, 22)
(23, 24, 25, 26)"

7½ (7, 6½, 6¾, 6¼)
(5¾, 6, 5½, 5)"

6 (6½, 7¼, 7¾, 8½)
(9, 9½, 10¼, 10¾)"

4 (5, 6, 7, 8)
(9, 10, 11, 12)"

- indicates placement of markers
- indicates pick up and knit
- ↑ direction of knitting



Knit, Relax, Smile, Repeat!

2024 © Universal Yarn, Inc.
www.universalyarn.com

All rights reserved. This pattern may not be reproduced for business, trade or sale.
Questions? Contact patterns@universalyarn.com