

Trucker's Sit-Upon

As a reminder, here are some basic rules for knitting this and the subsequent mosaic patterns.

1. White squares denote the Main Color and Black squares denote the Contrasting Color.
2. All rows are in garter stitch; i.e., Knit on both Right Side and Wrong Side rows.
3. Only one color is used on each row. The 1st square denotes the color for the row.
4. The first stitch is slipped purl-wise on each row. The previous colour will be on the front of your work – slip the stitch purl-wise, then take the yarn to the back through the needles, drop it, and pick up and knit with the other colored yarn. This is not a Mosaic rule however; it is a rule for this project.
5. One chart row represents both the Right Side and Wrong Side rows. Read the Right Side row from right to left and the Wrong Side row from left to right.
6. When you encounter the opposite color according to the chart, slip the stitch purl-wise with yarn in back on Right Side rows and with yarn in front on Wrong Side rows.
7. Frequently stop to admire your work and compare it to the chart. This is the best method for catching any errors as soon as possible. This isn't a Mosaic Rule either, but one that I recommend for every project.
8. Don't forget to "feed your floats".

Materials:

2 – 3.5oz [100g] balls of Lion Brand Color Theory in color Admiral

2 – 3.5oz [100g] balls of Lion Brand Color Theory in color Stonewash

US 8 [5.5mm] needles or whatever size you need to achieve the gauge.

5.0mm crochet hook (or close in size).

Finished Measurements:

Approximately 21" x 21"

Gauge:

15sts = 4" [10cm] in Mosaic pattern. Gauge is not that important but it will affect the overall size.

Abbreviations:

MC = Main Colour (light)

CC = Contrasting Colour (dark)

K = Knit

Sl = Slip stitch purl-wise

RS = Right Side

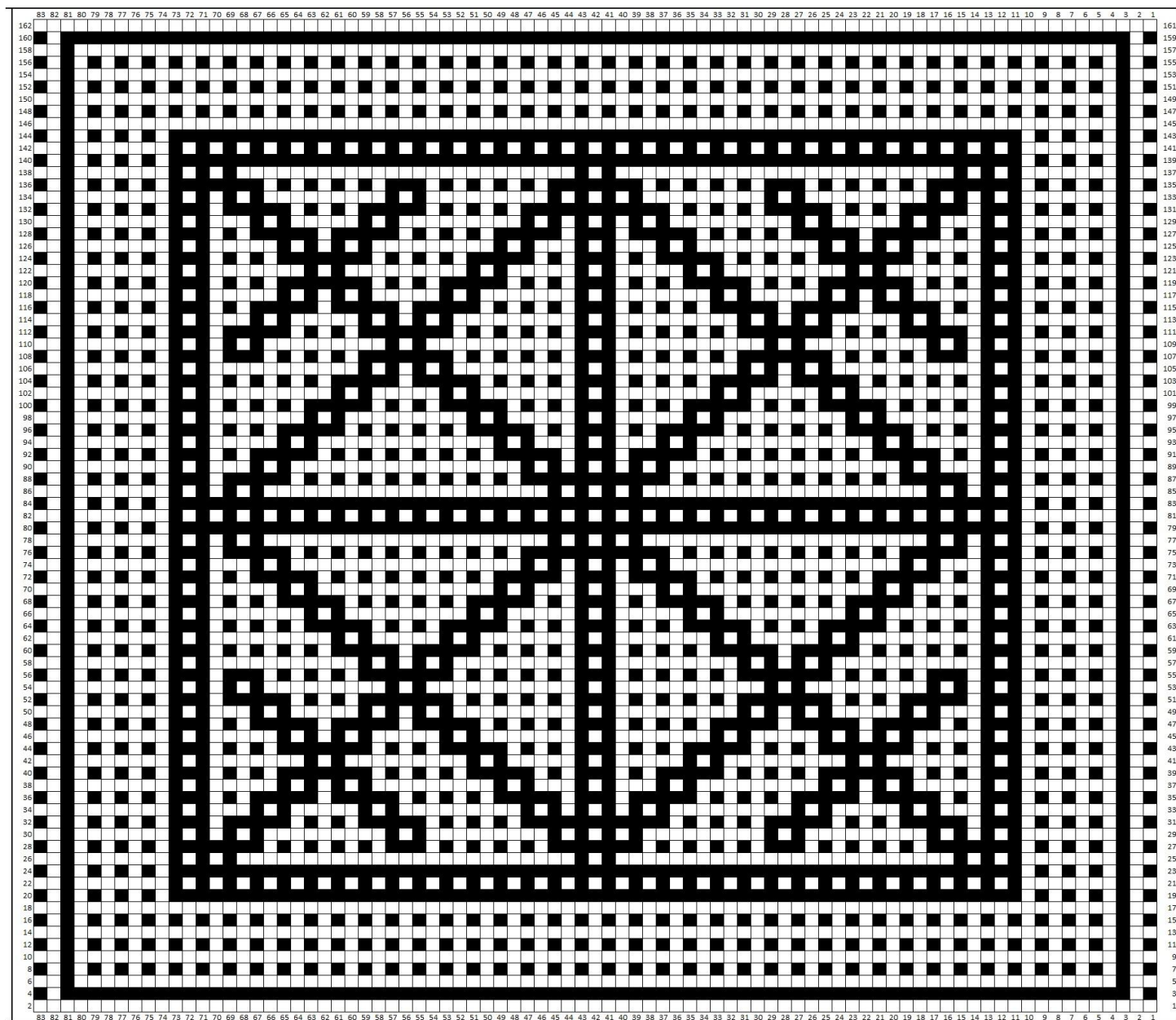
WS = Wrong Side

st(s) = Stitch(es)

wyif = With yarn in front

wyib = With yarn in back

rep = Repeat



Legend:

- ☐ Main Colour, Knit on MC rows, Slip on CC rows.
☒ Contrasting Colour, Knit on CC rows, Slip on MC rows.
 Slip 1st st on each row; Slip all sts purl-wise.
 RS Rows – Sl wyib; WS Rows – Sl wyif.

Row 1 MC: Cast on 83 sts using Crochet Cast On method.

Row 2 MC: Sl1, Knit to end of row.

Row 161 MC: Sl1, Knit to end of row.

Row 162 MC: Cast Off.