



## Pattern Collection: Women



### Dusk Poncho

Designed by Rachel Brockman

### SIZES

One Size

### FINISHED MEASUREMENTS

**Rectangle Width:** 27"

**Rectangle Length:** 40"

**Assembled Width:** 44"

### MATERIALS

**Universal Yarn Colorburst** (65% superwash fine merino, 35% acrylic; 200g/660 yds)

- 107 Lofoten – 2 balls

**Needles:** US Size 7 (4.5 mm) 24" circular or longer (to accommodate large number of sts) *or size needed to obtain gauge*

**Notions:** Tapestry needle, stitch markers, cable needle (cn)

### GAUGE

21 sts x 27 rows = 4" in Cable and Lace patt

**Save time check your gauge.**

For questions about this pattern, please contact [patterns@universalyarn.com](mailto:patterns@universalyarn.com).

*Knit. Relax. Smile. Repeat!*

2019 © Universal Yarn, Inc.

All rights reserved.

[www.universalyarn.com](http://www.universalyarn.com)

This pattern may not be reproduced for business, trade or sale.

## PATTERN NOTES

The Dusk Poncho is the perfect 'throw it on' accessory to finish your outfits for chilly days. This poncho is crafted in our stunning *Colorburst* yarn, which creates its own tonal stripes when knit. Between that and the graceful cable and lace pattern, this one is sure to be the envy of your knitting group!

This poncho is knit flat and seamed. It is comprised of two identical rectangles. An illustration is provided to assist with seaming.

## STITCH GUIDE

### 2x2 Left Cross (LC)

Slip 2 sts to cn and hold in front, k2 from LH ndl, k2 from cn.

### 2x2 Right Cross (RC)

Slip 2 sts to cn and hold in back, k2 from LH ndl, k2 from cn.

## Cable and Lace

*(Multiple of 31 sts)*

**Row 1 (RS):** \* K2, 2x2 LC, p3, k4tog, [yo, k1] 5 times, yo, ssssk, p3, 2x2 RC, k2; rep from \* to end.

**WS Rows 2-6:** \* K2, p4, k3, p13, k3, p4, k2; rep from \* to end.

**Row 3:** \* K6, p3, k4tog, [yo, k1] 5 times, yo, ssssk, p3, k6; rep from \* to end.

**Row 5:** Rep Row 3.

Rep Rows 1-6 for patt.

## PONCHO

### Rectangle *(Make two)*

*Note: You may wish to place markers between each pattern repeat to help you stay on track.*

Cast on 124 sts.

**Row 1 (RS):** Work Row 1 of Cable and Lace patt to end. Patt will be repeated 4 times across each row.

**Row 2 (WS):** Work Row 2 of Cable and Lace patt to end.

Cont as est'd through Row 6 of Cable and Lace patt, then rep Rows 1-6 of patt until piece meas 40" from cast-on edge, ending with a WS row.

Bind off all sts in patt.

## FINISHING

Gently wash and block to finished measurements. Weave in ends. Sew a short edge of each Rectangle to long edge of opposite rectangle, using illustration as a guide. Rep once more. Weave in rem ends.

## Abbreviations

<b>circ</b>	circular
<b>cn</b>	cable needle
<b>cont</b>	continue
<b>est'd</b>	established
<b>k</b>	knit
<b>k4tog</b>	knit 4 stitches together (2 sts dec'd)
<b>LH</b>	left hand
<b>meas</b>	measures
<b>p</b>	purl
<b>patt</b>	pattern
<b>rep</b>	repeat
<b>RS</b>	right side
<b>sssk</b>	slip next 4 sts individually knitwise, slip them back to left needle in this position, knit them together through the back loops (2 sts dec'd)
<b>st(s)</b>	stitch(es)
<b>WS</b>	wrong side
<b>yo</b>	yarn over

*Knit. Relax. Smile. Repeat!*

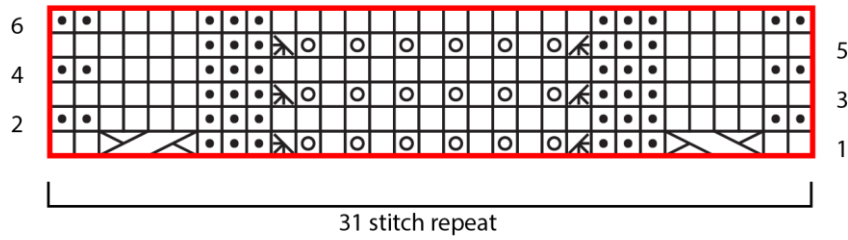
2019 © Universal Yarn, Inc.

All rights reserved.

[www.universalyarn.com](http://www.universalyarn.com)

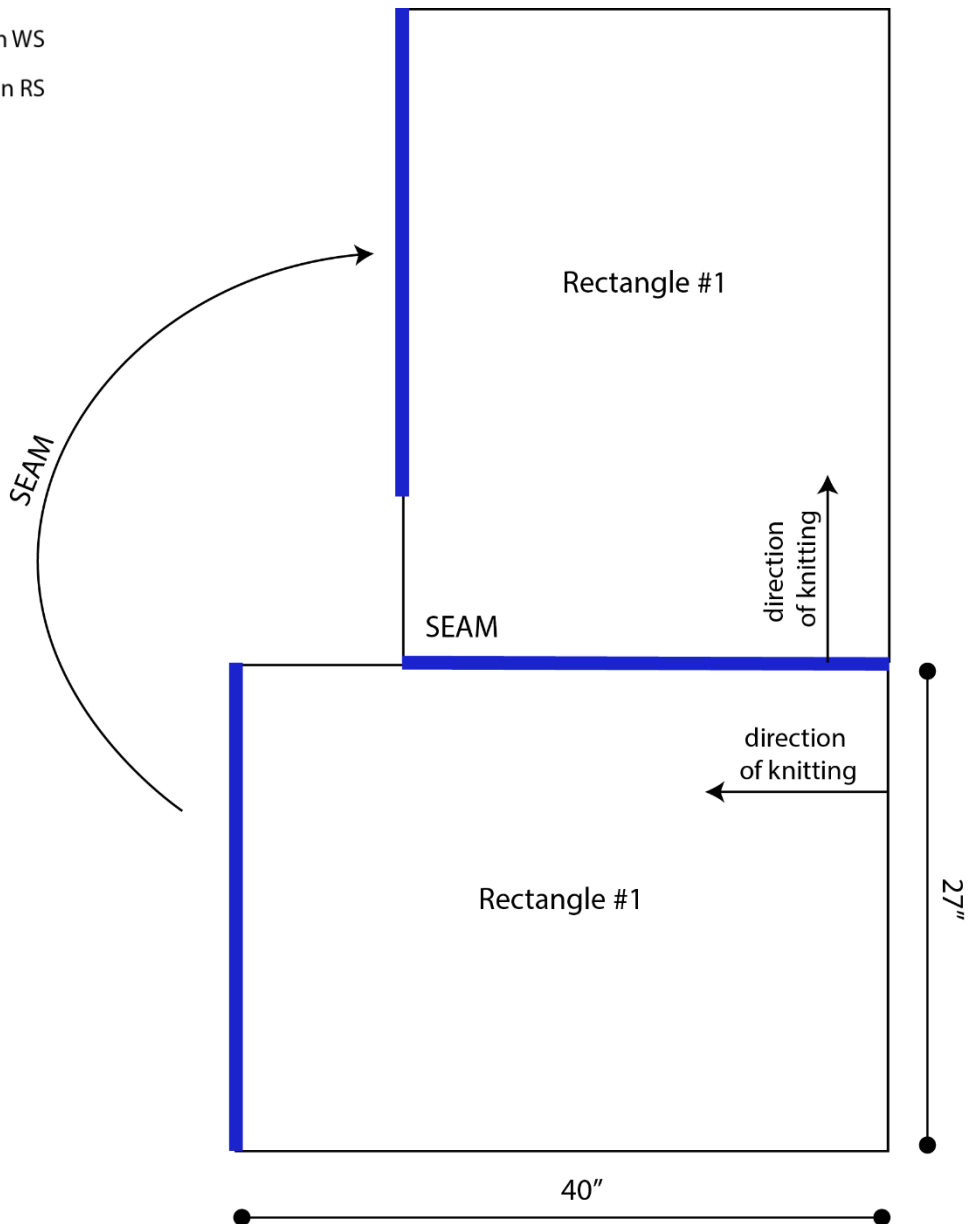
This pattern may not be reproduced for business, trade or sale.

## Cable and Lace



### Key

- pattern repeat
- knit on RS, purl on WS
- purl on WS, knit on RS
- / ssssk
- / k4tog
- yo
- / 2x2 LC
- / 2x2 RC



*Knit. Relax. Smile. Repeat!*

2019 © Universal Yarn, Inc.

All rights reserved.

[www.universalyarn.com](http://www.universalyarn.com)

This pattern may not be reproduced for business, trade or sale.