



## PATTERN COLLECTION

### Accessories



#### Gansew Shawl

Designed by Rachel Brockman

#### SKILL

Knitting

#### DIFFICULTY

Easy

#### SIZES

One size

#### FINISHED MEASUREMENTS

Wingspan: 53"

Depth at Center: 18½"

#### MATERIALS

Universal Yarn *Bella Tweed* (95% cotton, (62%-75% recycled), 5% other fibers; 50g/109 yds)

- 106 Care - 5 balls

**Needle:** US Size 7 (4.5 mm) 32" circular or longer (to accommodate large number of sts) *or size needed to obtain gauge*

**Notions:** Tapestry needle, stitch markers

#### GAUGE

17 sts x 23 rows = 4" in Stockinette stitch (St st) *after blocking*

**Save time, check your gauge.**

Knit, Relax, Smile, Repeat!

2024 © Universal Yarn, Inc.

[www.universalyarn.com](http://www.universalyarn.com)

All rights reserved. This pattern may not be reproduced for business, trade or sale.

Questions? Contact [patterns@universalyarn.com](mailto:patterns@universalyarn.com)

## PATTERN NOTES

Wrap yourself in the timeless elegance of the Gansey Shawl, where the simplicity of knit and purl stitches forms a reversible treasure. Knit in Bella Tweed, the airy cotton fibers and subtle tweed nubs provide a sophisticated texture that breathes through every season. Whether it's a crisp spring morning or cozy autumn evening, this shawl's versatility makes it a charming addition to your wardrobe.

This shawl is knit flat from the top down. Each right side row consists of four increases, and each wrong side row consists of two increases. Motifs in this pattern are created using only knits and purls. Each section of the shawl is both written and charted for your convenience.

You can find a tutorial for the Suspended Bind-off [at this link](#).

## PATTERN BEGINS

### SHAWL

#### Starting Tab

Cast on 3 sts.

**Set-up Rows 1-7:** Knit.

**Row 1 (RS):** K3, rotate work 90 degrees, pick up and knit 3 sts from side of Tab, pick up and knit 3 sts from cast-on edge – 9 sts.

**Row 2 (WS):** K3, pm, [p1, pm] 3 times, k3.

**Row 3:** K3, sl m, m1R, k1, m1L, sl m, k1, sl m, m1R, k1, m1L, sl m, k3 – 4 sts inc'd, 13 sts.

**Row 4:** K3, m1PL, purl to m, sl m, purl to m, m1PR, sl m, k3 – 2 sts inc'd, 15 sts.

#### Section 1 – Ridge

**Row 1 (RS):** K3, sl m, m1R, knit to m, m1L, sl m, k1, sl m, m1R, knit to m, m1L, sl m, k3 – 4 sts inc'd, 19 sts.

**Row 2 (WS):** K3, sl m, m1PL, knit to m, sl m, p1, sl m, knit to m, m1PR, sl m, k3 – 2 sts inc'd, 21 sts.

**Row 3:** Rep Row 1 – 4 sts inc'd, 25 sts.

**Row 4:** K3, sl m, m1PL, p1, \* k1, p1; rep from \* to m, sl m, p1, sl m, \* p1, k1; rep from \* to 1 st bef m, p1, m1PR, sl m, k3 – 2 sts inc'd, 27 sts.

**Row 5:** Rep Row 1 – 4 sts inc'd, 31 sts.

**Row 6:** K3, sl m, m1PL, p1, \* k1, p1; rep from \* to 1 st bef m, p1, sl m, p1, sl m, p1, \* p1, k1; rep from \* to 1 st bef m, p1, m1PR, sl m, k3 – 2 sts inc'd, 33 sts.

**Rows 7-8:** Rep Rows 1-2 – 6 sts inc'd, 39 sts.

#### Section 2 – Diagonals

**Row 1 (RS):** K3, sl m, m1R, \* k3, p1; rep from \* to m, m1L, sl m, k1, sl m, m1R, \* p1, k3; rep from \* to m, m1L, sl m, k3 – 4 sts inc'd, 43 sts.

**Row 2 (WS):** K3, sl m, m1PL, p1, \* p2, k1, p1; rep from \* to 1 st bef m, p1, sl m, p1, sl m, p1, \* p1, k1, p2; rep from \* to 1 st bef m, p1, m1PR, sl m, k3 – 2 sts inc'd, 45 sts.

**Row 3:** K3, sl m, m1R, k2, \* k1, p1, k2; rep from \* to 1 st bef m, k1, m1L, sl m, k1, sl m, m1R, k1, \* k2, p1, k1; rep from \* to 2 sts bef m, k2, m1L, sl m, k3 – 4 sts inc'd, 49 sts.

**Row 4:** K3, sl m, m1PL, p3, \* k1, p3; rep from \* to 2 sts bef m, k1, p1, sl m, p1, sl m, p1, k1, \* p3, k1; rep from \* to 3 sts bef m, k3, m1PR, sl m, k3 – 2 sts inc'd, 51 sts.

**Row 5:** K3, sl m, m1R, \* k3, p1; rep from \* to 2 sts bef m, k2, m1L, sl m, k1, sl m, m1R, k2, \* p1, k3; rep from \* to m, m1L, sl m, k3 – 4 sts inc'd, 55 sts.

**Row 6:** K3, m1PL, p1, \* p2, k1, p1; rep from \* to 3 sts bef m, p2, k1, sl m, p1, sl m, k1, p2, \* p1, k1, p2; rep from \* to 1 st bef m, p1, m1PR, sl m, k3 – 2 sts inc'd, 57 sts.

**Row 7:** K3, sl m, m1R, k2, \* k1, p1, k2; rep from \* to 3 sts bef m, k1, p1, k1, m1L, sl m, k1, sl m, m1R, k1, p1, k1, \* k2, p1, k1; rep from \* to 2 sts bef m, k2, m1L, sl m, k3 – 4 sts inc'd, 61 sts.

**Row 8:** K3, sl m, m1PL, p3, \* k1, p3; rep from \* to m, sl m, p1, sl m, \* p3, k1; rep from \* to 3 sts bef m, p3, m1PR, sl m, k3 – 2 sts inc'd, 63 sts.

#### Section 3 – Ridge

Work as for Section 1 – 24 sts inc'd, 87 sts.

#### Section 4 – Chevrons

**Row 1 (RS):** K3, sl m, m1R, knit to m, m1L, sl m, k1, sl m, m1R, knit to m, m1L, sl m, k3 – 4 sts inc'd, 91 sts.

**Row 2 (WS):** K3, m1PL, p1, \* p3, k1, p4; rep from \* to 1 st bef m, p1, sl m, p1, sl m, p1, \* p4, k1, p3; rep from \* to 1 st bef m, p1, m1PR, sl m, k3 – 2 sts inc'd, 93 sts.

**Row 3:** K3, sl m, m1R, k2, \* k2, p3, k3; rep from \* to 1 st bef m, k1, m1L, sl m, k1, sl m, m1R, k1, \* k3, p3, k2; rep from \* to 2 sts bef m, k2, m1L, sl m, k3 – 4 sts inc'd, 97 sts.

**Row 4:** K3, sl m, m1PL, k1, p2, \* p1, k5, p2; rep from \* to 2 sts bef m, p2, sl m, p1, sl m, p2, \* p2, k5, p1; rep from \* to 3 sts bef m, p2, k1, m1PR, sl m, k3 – 2 sts inc'd, 99 sts.

**Row 5:** K3, m1R, \* p3, k1; rep from \* 2 sts bef m, p2, m1L, sl m, k1, sl m, m1R, p2, \* k1, p3; rep from \* to m, m1L, sl m, k3 – 4 sts inc'd, 103 sts.

Knit, Relax, Smile, Repeat!

2024 © Universal Yarn, Inc.

[www.universalyarn.com](http://www.universalyarn.com)

All rights reserved. This pattern may not be reproduced for business, trade or sale.

Questions? Contact [patterns@universalyarn.com](mailto:patterns@universalyarn.com)

**Row 6:** K3, sl m, m1PL, p2, k3, \* k2, p3, k3; rep from \* to 3 sts bef m, k2, p1, sl m, p1, sl m, p1, k2, \* k3, p3, k2; rep from \* to 5 sts bef m, k3, p2, m1PR, sl m, k3 - 2 sts inc'd, 105 sts.

**Row 7:** K3, sl m, m1R, k4, p2, \* p1, k5, p2; rep from \* to 3 sts bef m, p1, k2, m1L, sl m, k1, sl m, m1R, k2, p1, \* p2, k5, p1; rep from \* to 6 sts bef m, p2, k4, m1L, sl m, k3 - 4 sts inc'd, 109 sts.

**Row 8:** K3, sl m, m1PL, p6, k1, \* p7, k1; rep from \* to 4 sts bef m, p4, sl m, p1, sl m, p4, \* k1, p7; rep from \* to last 7 sts, k1, p6, m1PR, sl m, k3 - 2 sts inc'd, 111 sts.

**Row 9:** K3, sl m, m1R, knit to m, m1L, sl m, k1, sl m, m1R, knit to m, m1L, sl m, k3 - 4 sts inc'd, 115 sts.

**Row 10:** K3, sl m, m1PL, p1, \* p3, k1, p4; rep from \* to 5 sts bef m, p3, k1, p1, sl m, p1, sl m, p1, k1, p3, \* p4, k1, p3; rep from \* to 1 st bef m, p1, m1PR, sl m, k3 - 2 sts inc'd, 117 sts.

**Row 11:** K3, sl m, m1R, k2, \* k2, p3, k3; rep from \* to 5 sts bef m, k2, p3, m1L, sl m, k1, sl m, m1R, p3, k2, \* k3, p3, k2; rep from \* to 2 sts bef m, k2, m1L, sl m, k3 - 4 sts inc'd, 121 sts.

**Row 12:** K3, sl m, m1PL, k1, p2, \* p1, k5, p2; rep from \* to 6 sts bef m, p1, k5, sl m, p1, sl m, k5, p1, \* p2, k5, p1; rep from \* to 3 sts bef m, p2, k1, m1PR, sl m, k3 - 2 sts inc'd, 123 sts.

**Row 13:** K3, sl m, m1R, \* p3, k1; rep from \* to 2 sts bef m, p2, m1L, sl m, k1, sl m, m1R, p2, \* k1, p3; rep from \* to m, m1L, sl m, k3 - 4 sts inc'd, 127 sts.

**Row 14:** K3, sl m, m1PL, p2, k3, \* k2, p3, k3; rep from \* to 7 sts bef m, k2, p3, k2, sl m, p1, sl m, k2, p3, k2, \* k3, p3, k2; rep from \* to 5 sts bef m, k3, p2, m1PR, sl m, k3 - 2 sts inc'd, 129 sts.

**Row 15:** K3, sl m, m1R, k4, p2, \* p1, k5, p2; rep from \* to 7 sts bef m, p1, k5, p1, m1L, sl m, k1, sl m, m1R, p1, k5, p1, \* p2, k5, p1; rep from \* to 6 sts bef m, p2, k4, m1L, sl m, k3 - 4 sts inc'd, 133 sts.

**Row 16:** K3, sl m, m1PL, p6, k1, \* p7, k1; rep from \* to m, sl m, p1, sl m, \* k1, p7; rep from \* to 6 sts bef m, k1, p6, m1PR, sl m, k3 - 2 sts inc'd, 135 sts.

### Section 5 – Ridge

Work as for Section 1 - 24 sts inc'd, 159 sts.

### Section 6 – Diagonals

Work as for Section 2, two times total - 48 sts inc'd, 207 sts.

### Section 7 – Ridge

Work as for Section 1 - 24 sts inc'd, 231 sts.

### Section 8 – Chevrons

Work as for Section 4, then repeat Rows 1-8 of Section 4, one more time - 72 sts inc'd, 303 sts.

### Section 9 – Ridge

Work as for Section 1 - 24 sts inc'd, 327 sts.

Loosely bind off all sts using the suspended bind-off method.

### FINISHING

Gently wash and block to finished measurements. Weave in ends.

### Abbreviations

*	indicates a repeat section
bef	before
circ	circular
garter st	knit every row
inc('d)	increase(d)
k	knit
m	marker
m1L	insert left needle from front to back under horizontal strand of yarn lying between st just worked and next st, knit or purl this st through the back loop (1 st inc'd)
m1PL	insert left needle from front to back under horizontal strand of yarn lying between st just worked and next st, purl this st through the back loop (1 st inc'd)
m1PR	insert left needle from back to front under horizontal strand of yarn lying between st just worked and next st, purl this st through the front loop (1 st inc'd)
m1R	insert left needle from back to front under horizontal strand of yarn lying between st just worked and next st, knit or purl this st through the front loop (1 st inc'd)
ndl	needle
p	purl
patt	pattern
pm	place marker
rep	repeat
RS	right side
sl	slip
St st	Stockinette stitch (knit on RS rows, purl on WS rows; in the rnd, knit every rnd)
st(s)	stitch(es)
WS	wrong side

Knit, Relax, Smile, Repeat!

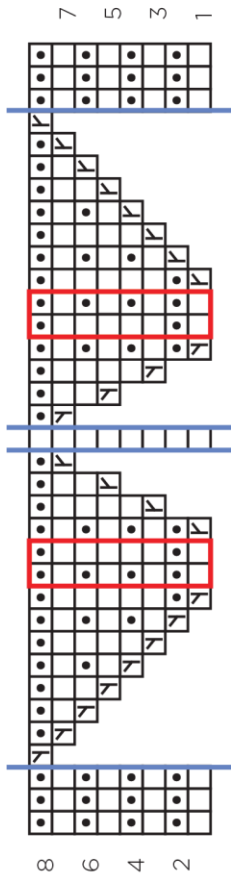
2024 © Universal Yarn, Inc.

[www.universalyarn.com](http://www.universalyarn.com)

All rights reserved. This pattern may not be reproduced for business, trade or sale.

Questions? Contact [patterns@universalyarn.com](mailto:patterns@universalyarn.com)

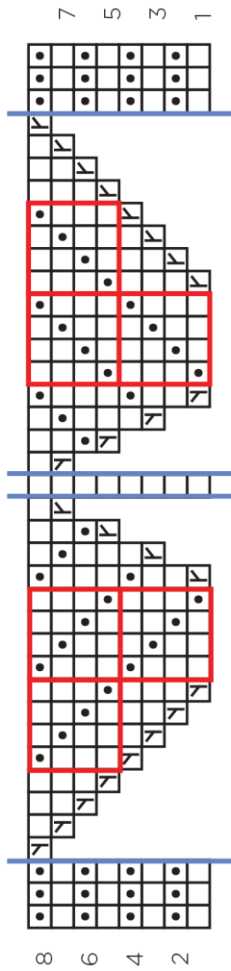
Sections 1, 3, 5, 7, 9 - Ridge



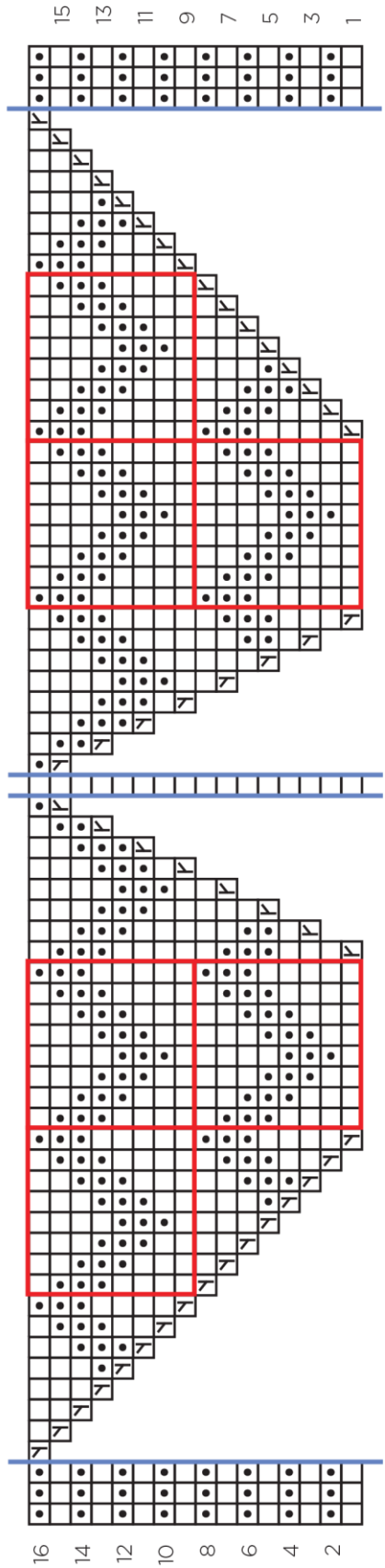
Key

- indicates marker
- pattern repeat
- knit on RS, purl on WS
- purl on RS, knit on WS
- m1R on RS, m1PR on WS
- m1L on RS, m1PL on WS

Sections 2 & 6 - Diagonals



Sections 4 & 8 - Chevrons



Knit, Relax, Smile, Repeat!

2024 © Universal Yarn, Inc.

[www.universalyarn.com](http://www.universalyarn.com)

All rights reserved. This pattern may not be reproduced for business, trade or sale.

Questions? Contact [patterns@universalyarn.com](mailto:patterns@universalyarn.com)