



## PATTERN COLLECTION

### Accessories



#### Holland Cowl

Designed by Afifa Sayeed

#### SKILL

Knitting

#### DIFFICULTY

Easy

#### SIZES

One Size

#### FINISHED MEASUREMENTS

Circumference: 20¼"

Height: 12"

Please note that measurements are taken after blocking

#### MATERIALS

Universal Yarn *Mystical Marl* (50% anti-pilling acrylic, 50% cotton; 50g/109 yds)

- 107 Lagoon (MC) - 1 ball
- 104 Wild Cherry (CC) - 1 ball

**Needle:** US Size 8 (5 mm) 16" circular or size needed to obtain gauge

**Notions:** Stitch markers, unique marker for bor, tapestry needle

#### GAUGE

19 sts x 24 rnds = 4" in Stranded Knitting, after blocking

Save time, check your gauge.

Knit, Relax, Smile, Repeat!

2024 © Universal Yarn, Inc.

[www.universalyarn.com](http://www.universalyarn.com)

All rights reserved. This pattern may not be reproduced for business, trade or sale.

Questions? Contact [patterns@universalyarn.com](mailto:patterns@universalyarn.com)

## PATTERN NOTES

The Holland Cowl brings together the beauty of intricate knitting and floral design. The cowl is worked in the round using two contrasting colors to create a striking, repeated motif of tulip blooms. The stranded colorwork technique adds texture and warmth, as the yarn carried behind the stitches provides extra insulation. This cowl is perfect for brightening chilly days with its soft, cozy feel and vibrant tulip design.

This cowl is knit seamlessly in the round from the bottom up.

The entire cowl is worked in the round using stranded knitting and is charted only. While working stranded knitting, you will need to catch your floats along the inside of the work approximately every 5 stitches. Take care not to carry your unused yarn too tightly across the wrong side of the work to prevent puckering in the fabric.

You may wish to place stitch markers between each pattern repeat to help you stay on track. If you do, make sure to use a unique marker for the beginning of round.

## PATTERN BEGINS

### COWL

With MC, cast on 96 sts. PM and join to knit in the rnd, being careful not to twist.

Work Rnds 1-73 of Tulips and Dots Chart. Patt will be repeated 6 times across each rnd.

Bind off all sts kwise.

### FINISHING

Gently wash and block to finished measurements.

Weave in ends.



### Abbreviations

CC	contrast color
kwise	knitwise
m	marker
ndl	needle
patt	pattern
pm	place marker
rep	repeat
rnd(s)	round(s)
sl	slip
st(s)	stitch(es)
wyib	with yarn held in back

Knit, Relax, Smile, Repeat!

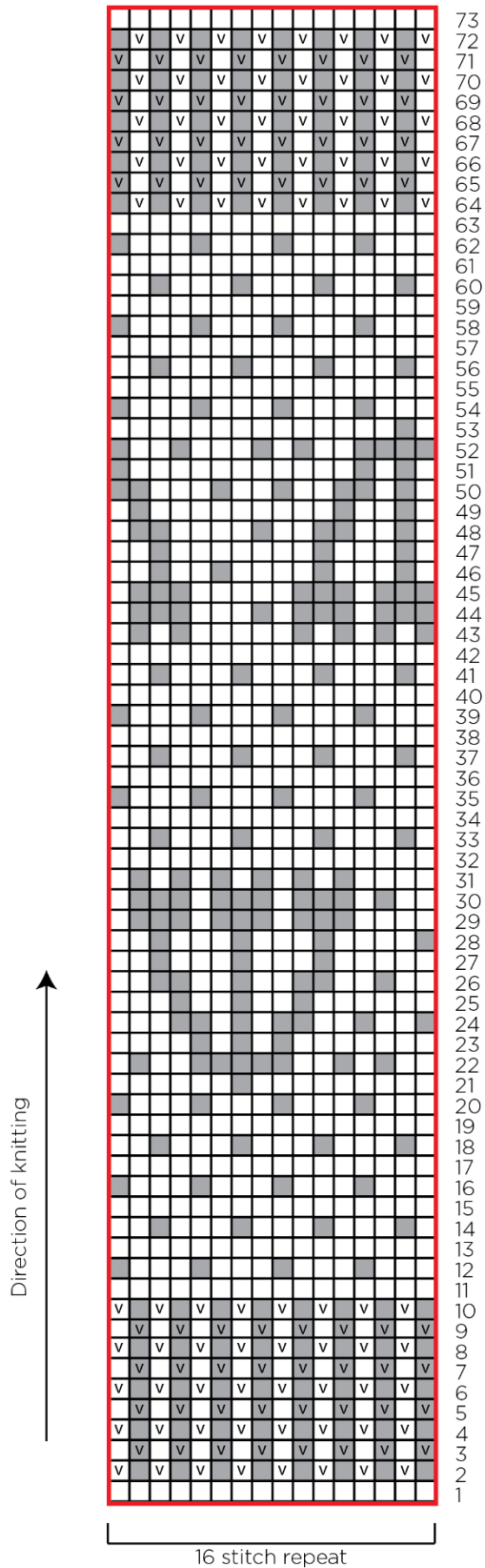
2024 © Universal Yarn, Inc.

[www.universalyarn.com](http://www.universalyarn.com)

All rights reserved. This pattern may not be reproduced for business, trade or sale.

Questions? Contact [patterns@universalyarn.com](mailto:patterns@universalyarn.com)

# Tulips and Dots



73  
72  
71  
70  
69  
68  
67  
66  
65  
64  
63  
62  
61  
60  
59  
58  
57  
56  
55  
54  
53  
52  
51  
50  
49  
48  
47  
46  
45  
44  
43  
42  
41  
40  
39  
38  
37  
36  
35  
34  
33  
32  
31  
30  
29  
28  
27  
26  
25  
24  
23  
22  
21  
20  
19  
18  
17  
16  
15  
14  
13  
12  
11  
10  
9  
8  
7  
6  
5  
4  
3  
2  
1

## Key

- pattern repeat
- With MC, knit
- v With MC, sl 1 wyib
- With CC, knit
- v With CC, sl 1 wyib

Knit, Relax, Smile, Repeat!

2024 © Universal Yarn, Inc.

[www.universalyarn.com](http://www.universalyarn.com)

All rights reserved. This pattern may not be reproduced for business, trade or sale.

Questions? Contact [patterns@universalyarn.com](mailto:patterns@universalyarn.com)