



Pattern Collection: Women



Jay Sweater

Designed by Rachel Brockman

SIZES

Extra Small (Small, Medium, Large, 1X, 2X, 3X, 4X, 5X)

FINISHED MEASUREMENTS

Bust: 33½ (37½, 41, 45¼, 50, 54¼, 57¾, 61¼, 65½)''

Length: 19½ (20, 20½, 21¼, 21¾, 22¼, 23, 23¼, 23½)''

Shown in Small size with approx. 3½'' positive ease.

MATERIALS

Fibra Natura Kingston Tweed (50% wool, 25% alpaca, 25% mixed fiber; 50g/194 yds)

- 110 Beryl (MC) – 4 (5, 5, 6, 7, 7, 8, 10, 11) skeins
- 102 Calcite (CC) – 1 (1, 2, 2, 2, 2, 2, 3, 3) skeins

Needles: Needle A - US Size 7 (4.5 mm) 16'' & 24'' circular and set of dpns *or size needed to obtain gauge*

Needle B - US Size 6 (4 mm) 16'' & 24'' circular and set of dpns *or size needed to obtain gauge*

Needle C - US Size 5 (3.75 mm) 16'' & 24'' circular

Notions: Tapestry needle, stitch markers, stitch holder or waste yarn

Knit. Relax. Smile. Repeat!

2019 © Universal Yarn, Inc.

All rights reserved.

www.universalyarn.com

This pattern may not be reproduced for business, trade or sale.

GAUGE

23 sts x 30 rnds = 4" in St st using Ndl B

23 sts x 27 rnds = 4" in Yoke patt using Ndl A

Save time check your gauge.

PATTERN NOTES

Named after forest-dwelling jays, this slightly cropped sweater subtly nods to the patterning on their plumage. From scrub jays to blue jays, I've always admired the confidence and curiosity of these beautiful birds. Perfect for those curious knitters seeking to boost their colorwork confidence, this straight-forward pullover would be a great first yoked sweater.

Jay is worked seamlessly in the round from the top-down. The body and sleeves are separated at the armhole. The neckline and sleeve cuffs are worked in the contrast color. When working in the yoke pattern, you may wish to place stitch markers between each repeat to help you stay on track.

STITCH GUIDE

K1, P1 Rib

(even number of sts)

Rnd 1: * K1, p1; rep from * to end.

Rep Rnd 1 for patt.

SWEATER

Yoke

With 16" Ndl C and CC, cast on 96 (108, 116, 128, 128, 132, 132, 134, 134) sts. PM and join to knit in the round, being careful not to twist. Work in K1, P1 Rib until piece meas $\frac{3}{4}$ ($\frac{3}{4}$, 1, 1, 1, 1 $\frac{1}{4}$, 1 $\frac{1}{4}$, 1 $\frac{1}{2}$, 1 $\frac{1}{2}$)" from cast-on edge. Change to Ndl A. Join MC, do not break CC.

Next Rnd: With MC, knit to end.

1X Size Only

Inc Rnd: With MC, k8, [m1, k16] 7 times, m1, k8 – 8 sts inc'd, 136 sts.

2X, 3X, 4X, & 5X Sizes Only

Increase Rnd: With MC, k4 (2, 1, 1), [m1, k9 (5, 4, 4)] 2 (10, 16, 4) times, [m1, k8 (4, 3, 3)] 11 (7, 1, 33) times, [m1, k9 (5, 4, 4)] 2 (10, 16, 4) times,

m1, k4 (2, 2, 2) – 16 (28, 34, 42) sts inc'd, 148 (160, 168, 176) sts.

Establish Yoke Pattern

All sizes

Note: You may wish to place stitch markers between each repeat to help you stay on track.

Rnd 1: Work Rnd 1 of Yoke patt to end. Patt will be repeated 24 (27, 29, 32, 34, 37, 40, 42, 44) times across each rnd.

Rnd 2: Work next rnd of Yoke patt to end – 48 (54, 58, 64, 68, 74, 80, 84, 88) sts inc'd, 144 (162, 174, 192, 204, 222, 240, 252, 264) sts.

Cont working as est'd through Rnd 31 of Yoke patt – 144 (162, 174, 192, 204, 222, 240, 252, 264) sts inc'd, 288 (324, 348, 384, 408, 444, 480, 504, 528) sts.

Change to Ndl B. Break CC, cont with MC only.

Work even in St st until piece meas 7 $\frac{1}{2}$ (8, 8 $\frac{1}{2}$, 9, 9 $\frac{1}{2}$, 10, 10 $\frac{1}{2}$, 10 $\frac{3}{4}$, 11)" from cast-on edge.

Separate Body and Sleeves

Rnd 1: K88 (100, 108, 120, 130, 140, 148, 158, 170) Front body sts, slip next 56 (62, 66, 72, 74, 82, 92, 94, 94) Sleeve sts to stitch holder or waste yarn, cast on 8 (8, 10, 10, 14, 16, 18, 18, 18) underarm sts, k88 (100, 108, 120, 130, 140, 148, 158, 170) Back body sts, slip next 56 (62, 66, 72, 74, 82, 92, 94, 94) Sleeve sts to stitch holder or waste yarn, cast on 8 (8, 10, 10, 14, 16, 18, 18, 18) underarm sts, pm to denote new bor – 192 (216, 236, 260, 288, 312, 332, 352, 376) Body sts rem.

Body

Work even in St st until piece meas 10 $\frac{1}{2}$ (10 $\frac{1}{2}$, 10 $\frac{1}{2}$, 10 $\frac{3}{4}$, 10 $\frac{3}{4}$, 10 $\frac{3}{4}$, 11, 11, 11)" from separation. Change to Ndl C.

Hem

Work in K1, P1 Rib until piece meas 12 (12, 12, 12 $\frac{1}{4}$, 12 $\frac{1}{4}$, 12 $\frac{1}{4}$, 12 $\frac{1}{2}$, 12 $\frac{1}{2}$, 12 $\frac{1}{2}$)" from separation. Loosely bind off all sts in patt.

Sleeves

With MC and Ndl B DPNs, beg at center of underarm cast-on, pick up and knit 4 (4, 5, 5, 7, 8, 9, 9, 9) sts along cast-on edge, knit 56 (62, 66, 72,

Knit. Relax. Smile. Repeat!

2019 © Universal Yarn, Inc.

All rights reserved.

www.universalyarn.com

This pattern may not be reproduced for business, trade or sale.

74, 82, 92, 94, 94) Sleeve sts from holder or waste yarn, pick up and knit 4 (4, 5, 5, 7, 8, 9, 9, 9) sts along cast-on edge, pm to denote bor – 64 (70, 76, 82, 88, 98, 110, 112, 112) Sleeve sts. Work even in St st until Sleeve meas 1½” from picked-up edge.

Shape Sleeves

Dec Rnd: K2, k2tog, knit to 4 sts bef end, ssk, k2 – 2 sts dec’d, 62 (68, 74, 80, 86, 96, 108, 110, 110) sts rem.

Rep Dec Rnd every 12 (8, 6, 6, 6, 4, 4, 4, 4) rnds, 0 (4, 7, 3, 1, 10, 5, 5, 7) more times, then rep Dec Rnd every 10 (6, 4, 4, 4, 2, 2, 2, 2) rnds, 4 (2, 1, 7, 11, 6, 16, 16, 13) times – 8 (12, 16, 20, 24, 32, 42, 42, 40) sts dec’d, 54 (56, 58, 60, 62, 64, 66, 68, 70) sts rem. Work even in St st until Sleeve meas 11 (11, 11¼, 11¼, 11½, 11½, 11½, 11¾, 11¾, 12)” from separation. Break MC. Join CC and change to Ndl C.

Cuff

Work in K1, P1 Rib until Sleeve meas 12 (12, 12¼, 12¼, 12½, 12½, 12¾, 12¾, 13, 13)” from separation. Bind off all sts loosely in patt.



FINISHING

Gently wash and block to finished measurements. Weave in ends.

Abbreviations

bef	before
beg	begin(ning)
bor	beginning of round
CC	contrast color
circ	circular
cont	continue
dec('d)	decrease(d)
dpn(s)	double pointed needle(s)
est'd	established
inc('d)	increase(d)
k	knit
k2tog	knit 2 stitches together (1 st dec'd)
m	marker
m1	insert left needle from front to back under horizontal strand of yarn lying between st just worked and next st, knit or purl this st through the back loop (1 st inc'd)
MC	main color
meas	measures
ndl	needle
p	purl
patt	pattern
pm	place marker
rem	remain(ing)
rep	repeat
rnd	round
ssk	slip next 2 sts individually knitwise, slip them back to left needle in this position, knit them together through the back loops (1 st dec'd)
St st	Stockinette stitch (knit on RS rows, purl on WS rows; in the rnd, knit every rnd)
st(s)	stitch(es)

Knit. Relax. Smile. Repeat!

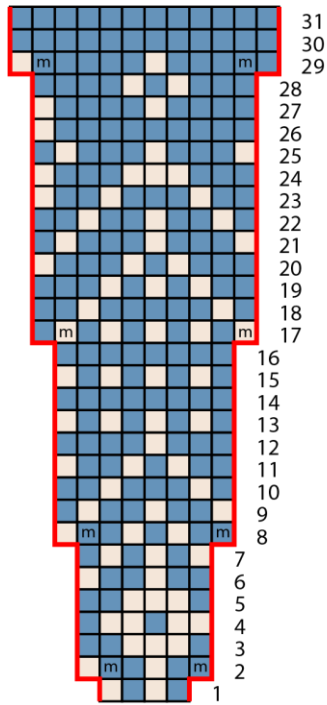
2019 © Universal Yarn, Inc.

All rights reserved.

www.universalyarn.com

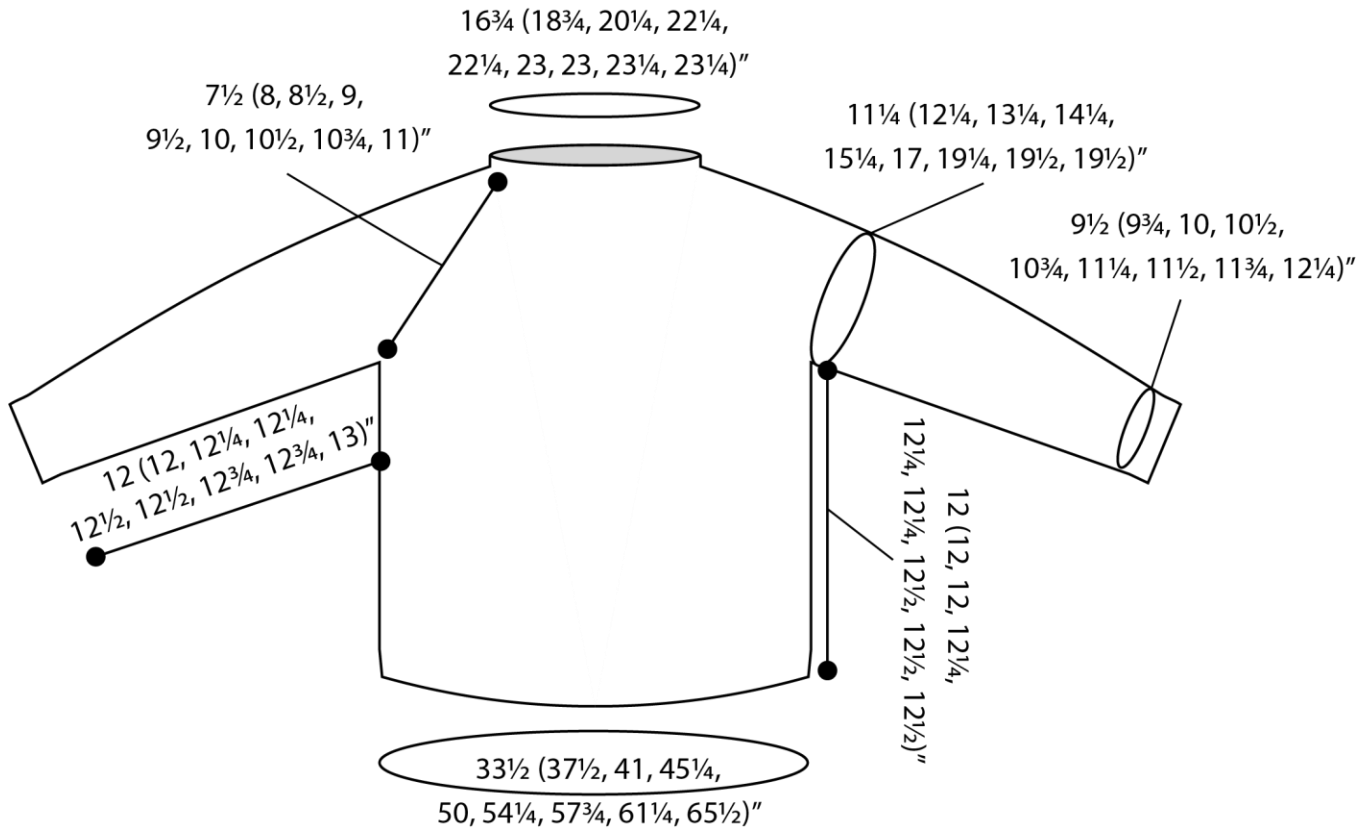
This pattern may not be reproduced for business, trade or sale.

Yoke



Key

- pattern repeat
- with MC, knit
- with MC, m1
- with CC, knit
- with CC, m1



Knit. Relax. Smile. Repeat!

2019 © Universal Yarn, Inc.

All rights reserved.

www.universalyarn.com

This pattern may not be reproduced for business, trade or sale.