



PATTERN COLLECTION

Home



Sunshine Throw - Worsted

Designed by Rachel Brockman

SKILL

Knitting

DIFFICULTY

Easy

SIZES

One Size

FINISHED MEASUREMENTS

Width: 34½"

Length: 42½"

MATERIALS

[Universal Yarn Cotton Supreme](#) (100% cotton; 100g/180 yds)

- 617 Seafoam - 6 hanks

Needle: US Size 8 (5 mm) 24" circular or longer (to accommodate large number of sts) *or size needed to obtain gauge*

Notions: Tapestry needle, stitch markers

GAUGE

19 sts x 23 rows = 4" in Sunshine Lace patt after blocking

Save time, check your gauge.

Knit, Relax, Smile, Repeat!

2024 © Universal Yarn, Inc.

www.universalyarn.com

All rights reserved. This pattern may not be reproduced for business, trade or sale.

Questions? Contact patterns@universalyarn.com

PATTERN NOTES

This lighter-weight version of the popular Sunshine Throw is knit with one strand of our soft, supple, Cotton Supreme yarn.

This blanket is knit flat from the bottom up. The instructions are written and charted for your convenience.

STITCH GUIDE

Sunshine Lace

(multiple of 17 sts)

Row 1 (RS): * K3, k2tog, k3, yo, k1, yo, k3, ssk, k3; rep from * to end.

WS Rows 2-8: Purl.

Row 3: * K2, k2tog, [k3, yo] 2 times, k3, ssk, k2; rep from * to end.

Row 5: * K1, k2tog, k3, yo, k5, yo, k3, ssk, k1; rep from * to end.

Row 7: * K2tog, k3, yo, k7, yo, k3, ssk; rep from * to end.

Rep Rows 1-8 for patt.

BLANKET

Lower Border

Cast on 163 sts.

Row 1 (RS): Knit.

Rnd 2 (WS): Knit.

Rep Rows 1-2, 5 more times.

Sunshine Lace Section

Note: You may choose to place markers between pattern repeats to help you stay on track.

Row 1 (RS): K5, pm, work Row 1 of Sunshine Lace patt to last 5 sts, pm, k5. Sunshine Lace patt will be repeated 9 times across each row.

Row 2 (WS): K5, sl m, work Row 2 of Sunshine Lace patt to m, sl m, k5.

Cont as est'd through Row 8 of Sunshine Lace patt, then rep Rows 1-8 of Sunshine Lace patt, 26 more times. Piece meas approx. 40" from cast-on edge.

Upper Border

Row 1 (RS): Knit.

Row 2 (WS): Knit.

Rep Rows 1-2, 5 more times. Bind off all sts kwise.

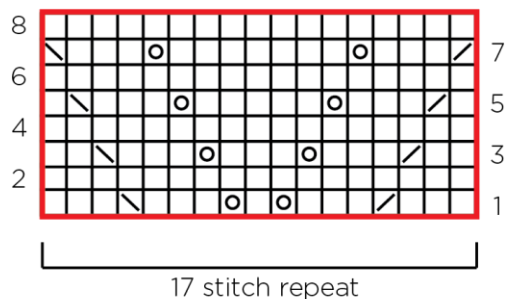
FINISHING

Gently wash and block to finished measurements. Weave in ends.

Abbreviations

*	indicates a repeat section
approx.	approximately
cont	continue
est'd	established
k	knit
k2tog	knit 2 stitches together (1 st dec'd)
kwise	knitwise
m	marker
meas	measures
p	purl
patt	pattern
pm	place marker
rep	repeat
RS	right side
sl	slip
ssk	slip next 2 sts individually knitwise, slip them back to left needle in this position, knit them together through the back loops (1 st dec'd)
st(s)	stitch(es)
WS	wrong side
yo	yarn over

Sunshine Lace



Key

-  pattern repeat
-  knit on RS, purl on WS
-  k2tog
-  yarnover
-  ssk

Knit, Relax, Smile, Repeat!

2024 © Universal Yarn, Inc.

www.universalyarn.com

All rights reserved. This pattern may not be reproduced for business, trade or sale.

Questions? Contact patterns@universalyarn.com