



Pattern Collection: Home



Wickerwork Blanket

Designed by Universal Yarn Design Team

SIZE

One Size

FINISHED MEASUREMENTS

Width: 63"

Length: 63"

MATERIALS

Universal Yarn Bella Chenille Big (100% Polyester; 200g/87 yds)

- 410 Oatmeal – 10 skeins

Needles: US Size 15 (10 mm) 40" circular or longer (to accommodate large number of sts) *or size needed to obtain gauge*

Notions: Tapestry needle, stitch markers

GAUGE

8 sts x 9 rows = 4" in Double Wicker patt

For questions about this pattern, please contact patterns@universalyarn.com.

Knit. Relax. Smile. Repeat!

2019 © Universal Yarn, Inc.

All rights reserved.

This pattern may not be reproduced for business, trade or sale.

PATTERN NOTES

We can think of few things better than curling up on the couch during a rainy Saturday afternoon. Whether you're enjoying a good book, watching reruns of your favorite tv show, or just snuggling up with your favorite pet, you'll be nothing short of cozy wrapped up in the Wickerwork Blanket. Think a blanket this size will take forever to knit? Think again! Knit flat using Bella Chenille Big, this blanket takes fewer than 900 yards – that's less than most sweaters!

STITCH GUIDE

Left Twist (LT): Knit the second st on the left ndl through the back loop, knit the first st through the front loop, slip both sts from ndl.

Left Purl Twist (LPT): Purl the second st on the left ndl through the back loop, knit the first st through the front loop, slip both sts from ndl.

Right Twist (RT): K2tog but do not slip st from ndl, knit the first st again, slip both sts from ndl.

Right Purl Twist (RPT): K2tog but do not slip st from ndl, purl the first st again, slip both sts from ndl.

Double Wicker

(multiple of 6 sts, plus 4)

Row 1 (RS): * LPT, RPT, RT; rep from * to last 4 sts, LPT, RPT.

Row 2 (WS): K1, p2, k1, * [p2, k1] 2 times; rep from * to end.

Row 3: K1, * LPT, RPT, LPT; rep from * to last 3 sts, LPT, k1.

Row 4: P2, k1, * p1, k2, p2, k1; rep from * to last st, p1.

Row 5: * LT, LPT, p2; rep from * to last 4 sts, LT, LPT.

Row 6: P1, k1, p2, * k2, p1, k1, p2; rep from * to end.

Row 7: K1, * LT, LPT, RPT; rep from * to last 3 sts, LT, k1.

Row 8: P3, * [k1, p2] 2 times; rep from * to last st, p1.

Row 9: * RPT, LPT, RPT; rep from * to last 4 sts, RPT, LPT.

Row 10: P1, k2, p1, * k1, p2, k2, p1; rep from * to end.

Row 11: K1, * p2, [RPT] 2 times; rep from * to last 3 sts, p2, k1.

Row 12: P1, k2, * [k1, p1] 2 times, k2; rep from * to last st, p1.

Rep Rows 1-12 for patt.

BLANKET

Lower Border

Cast on 122 sts.

Row 1 (RS): Knit.

Rnd 2 (WS): Knit.

Wickerwork Section

Row 1 (RS): K2, pm, work Row 1 of Double Wicker patt to last 2 sts, pm, k2. Patt will be repeated 19 times across each row.

Row 2 (WS): K2, sl m, work Row 2 of Double Wicker patt to last 2 sts, sl m, k2.

Cont as est'd through Row 12 of Double Wicker patt, then rep Rows 1-12 of Double Wicker patt 10 more times.

Upper Border

Row 1 (RS): Knit.

Rnd 2 (WS): Knit.

Bind off all sts kwise.

FINISHING

Gently wash and block to finished measurements. Weave in ends.

Abbreviations

cont	continue
est'd	established
k	knit
kwise	knitwise
m	marker
ndl	needle
p	purl
patt	pattern
pm	place marker
rep	repeat
RS	right side
sl	slip
st(s)	stitch(es)
WS	wrong side

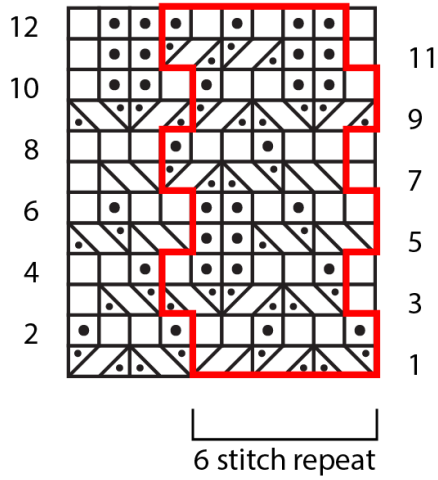
Knit. Relax. Smile. Repeat!

2019 © Universal Yarn, Inc.








All rights reserved.

This pattern may not be reproduced for business, trade or sale.

Double Wicker



Key

-  pattern repeat
-  knit on RS, purl on WS
-  purl on RS, knit on WS
-  LPT
-  RPT
-  LT
-  RT

Knit. Relax. Smile. Repeat!

2019 © Universal Yarn, Inc.

All rights reserved.

This pattern may not be reproduced for business, trade or sale.