



Pattern Collection: Accessories



Willowwork Cowl

Designed by Amy Gunderson

SIZE

Small (Large)

Shown in Small size.

FINISHED MEASUREMENTS

Circumference: 27½ (48¾)"

Depth: 13½"

MATERIALS

Universal Yarn *Deluxe Worsted* (100% superwash wool; 100g/220 yds)

- 23503 Charcoal Heather (A) – 1 (2) skeins
- 15006 Spice Rustic (B) – 1 (2) skeins

Needle: US Size 8 (5 mm) 24 (32)" circular *or size needed to obtain gauge*

US Size 6 (4 mm) 24 (32)" circular

Notions: Tapestry needle, cable needle, stitch marker

GAUGE

21 sts x 22 rows = 4" in Willowwork patt with larger ndl

Save time, check your gauge.

Knit. Relax. Smile. Repeat!

This pattern may not be reproduced for business, trade or sale.

PATTERN NOTES

Cowls are the perfect addition to any winter ensemble. Ideal for staying toasty, easy to style, and quick-to-knit, you'll love this project. Worked in the round from the bottom up, this striking cowl combines thoughtful ribbing, twisted stitches, and stranded colorwork. It uses Deluxe Worsted Superwash – a yarn that is interchangeable with Deluxe Worsted. Both yarns offer endless color combinations.

There are two options for working each of the types of crosses – choose the one that works best for you!

STITCH GUIDE

Ribbing

(multiple of 8 sts)

Rnd 1: * K1, p2, k1, p1, k1, p2; rep from * to end. Rep Rnd 1 for patt.

Note: The ribbing as written here in the pattern is a bit different than what is shown in the photo. As written here, the knit columns will smoothly transition into the crossed stitches, unlike the photo.

Option 1:

Right Cross (RC): Sl next st to cn and hold in back, k1A from left ndl, k1B from cn.

Left Cross (LC): Sl next st to cn and hold in front, k1B from left ndl, k1A from cn.

1x1x1 Left Cross (LC): Sl next st to cn and hold in front, RC from left ndl, k1A from cn.

Option 2:

Right Cross (RC): K2tog A but do not sl st from ndl, knit the first st again with B, sl both sts from ndl.

Left Cross (LC): Knit the second st on the left ndl through the back loop with B, knit the first st through the front loop with A, sl both sts from ndl.

1x1x1 Left Cross (LC): Sl next st to cn and hold in front, RC, k1A from cn.

Willowwork

(multiple of 8 sts)

Set-up Rnd: * K1A, k2B, k1A, k1B, k1A, k2B; rep from * to end.

Rnd 1: * K3B, 1x1x1 LC, k2B; rep from * to end.

Rnd 2: * K2B, RC, k1B, LC, k1B; rep from * to end.

Rnd 3: * K1B, RC, k3B, LC; rep from * to end.

Rnds 4-5: * K1B, k1A, k2B, k1A, k2B, k1A; rep from * to end.

Rnd 6: Remove BOR m. Sl the last st from Rnd 5 back to left ndl. * 1x1x1 LC, [k1B, k1A] 2 times, k1B; rep from * to end. Sl next st (first st of the initial 1x1x1 LC of this rnd), replace BOR m.

Rnds 7-8: Rep Rnds 4-5.

Rnd 9: * K1B, LC, k3B, RC; rep from * to end.

Rnd 10: * K2B, LC, k1B, RC, k1B; rep from * to end.

Final Rnd: Rep Set-up Rnd.

Rep Rnds 1-10 for patt.

COWL

With A and smaller ndl, cast on 144 (256) sts. PM and join to work in the rnd, being careful not to twist.

Lower Edge

Rep Rnd 1 of Ribbing, 10 times. Patt will be repeated 18 (32) times across rnd.

Main Cowl

Switch to larger ndl. Work Set-up Rnd of Willowwork patt. Rep Rnds 1-10 of patt, 5 times, then rep Rnd 1, 1 more time. Work Final Rnd.

Upper Edge

Switch to smaller ndl. Rep Rnd 1 of Ribbing, 10 times. Bind off all sts in patt.

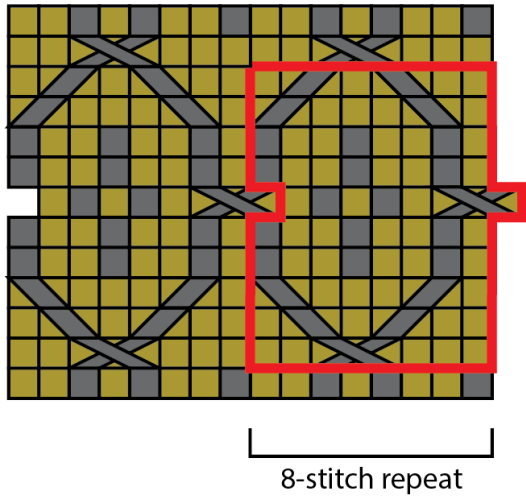
FINISHING

Weave in ends and block.

Knit. Relax. Smile. Repeat!








This pattern may not be reproduced for business, trade or sale.

Willowwork



Final Rnd
1
10
9
8
7
6
5
4
3
2
1
Set-up Rnd

Key

-  A, knit
-  A, purl
-  B, knit
-  RC
-  LC
-  1x1x1 LC
-  pattern repeat

Ribbing



1

Abbreviations

bor	beginning of round
cn	cable needle
k	knit
m	marker
ndl	needle
p	purl
patt	pattern
pm	place marker
rep	repeat
rnd	round
sl	slip
st(s)	stitch(es)

Knit. Relax. Smile. Repeat!

This pattern may not be reproduced for business, trade or sale.