



## Pattern Collection: Accessories



### Woodlawn Hat

Designed by Rachel Brockman

#### SIZES

Adult Small/Medium (Adult  
Medium/Large)

*Shown in Adult Small/Medium size.*

#### FINISHED MEASUREMENTS

**Brim Circumference:** 18 (21)''

*Stretches to approx. 23 (26)''*

**Length:** 10½ (11¼)'' with brim uncuffed

#### MATERIALS

**Fibra Natura Kingston Tweed** (50% wool, 25% alpaca, 25% mixed fiber; 50g/194 yds)

- 108 Amethyst – 1 (2) skeins

**Needles:** US Size 6 (4 mm) 16'' circular and set of dpns *or size needed to obtain gauge*

US Size 4 (3.5 mm) 16'' circular *or size needed to obtain gauge*

**Notions:** Tapestry needle, stitch markers

#### GAUGE

26 sts x 32 rnds = 4'' in Texture patt using larger nd!

**Save time check your gauge.**

*Knit. Relax. Smile. Repeat!*

2019 © Universal Yarn, Inc.

All rights reserved.

[www.universalyarn.com](http://www.universalyarn.com)

This pattern may not be reproduced for business, trade or sale.

## PATTERN NOTES

Some of the best hikes are taken up in the mountains on crisp autumn days. As you stroll towards your view of fiery autumn foliage, there is a cool breeze in the air – just enough to make you reach for your favorite hat. Cozy, textured, and lightweight, the Woodlawn Hat is ideal for those beautiful days on the trail.

This hat is knit in the round from the bottom up. The sample size (Adult Small/Medium) weighs 46 grams. Ensure your gauge is accurate to prevent running out of yarn. Alternatively, you may wish to purchase an additional skein of yarn.

## STITCH GUIDE

**Left Twist (LT):** Knit the second st on the left ndl through the back loop, knit the first st through the front loop, slip both sts from ndl.

**Right Twist (RT):** K2tog but do not slip st from ndl, knit the first st again, slip both sts from ndl.

### 1x2 Left Cross (LC)

Slip 1 st to cn and hold in front, k2 from LH ndl, k1 from cn.

### 1x2 Right Cross (RC)

Slip 2 sts to cn and hold in back, k1 from LH ndl, k2 from cn.

## Rib

*(repeat of 18 sts)*

**Rnd 1:** \* [P1, k1] 4 times, p2, [k1, p1] 4 times; rep from \* to end.

Rep Rnd 1 for patt.

## Texture

*(repeat of 18 sts)*

**Rnd 1:** \* P1, 1x2 LC, p1, k3, p2, k3, p1, 1x2 RC, p1; rep from \* to end.

**Rnd 2:** \* [P1, k3] 2 times, p2, [k3, p1] 2 times; rep from \* to end.

**Rnd 3:** Rep Rnd 2.

**Rnd 4:** \* P1, 1x2 LC, p10, 1x2 RC, p1; rep from \* to end.

**Rnd 5:** Rep Rnd 2.

**Rnd 6:** \* P1, k3, p10, k3, p1; rep from \* to end.  
Rep Rnds 1-6 for patt.



## HAT

With smaller ndl, cast on 108 (126) sts. PM and join to knit in the rnd, being careful not to twist.

### Brim

*Note: You may wish to place stitch markers between each pattern repeat to help stay on track.*

Work in Rib patt until piece meas 4" from cast-on edge. Patt will be repeated 6 (7) times across each rnd. Change to larger 16" circ.

### Main Hat

**Rnd 1:** Work Rnd 1 of Texture patt to end. Patt will be repeated 6 (7) times across each rnd.

**Rnd 2:** Work Rnd 2 of Texture patt to end. Cont as est'd through Rnd 6 of Texture patt, then rep Rnds 1-6 of Texture patt 5 (6) more times. Piece meas approx. 8 (9¼)" from cast-on edge.

### Shape Crown

*Note 1: This section is also charted for your convenience.*

*Note 2: Change to DPNs when there are too few stitches to fit comfortably onto circular needle.*

*Knit. Relax. Smile. Repeat!*

2019 © Universal Yarn, Inc.

All rights reserved.

[www.universalyarn.com](http://www.universalyarn.com)

This pattern may not be reproduced for business, trade or sale.

**Rnd 1:** \* P1, 1x2 LC, p1, k2, ssp, p2tog, k2, p1, 1x2 RC, p1; rep from \* to end – 12 (14) sts dec'd, 96 (112) sts rem.

**Rnd 2:** \* P1, k3, p1, k2, p2, k2, p1, k3, p1; rep from \* to end.

**Rnd 3:** Rep Rnd 2.

**Rnd 4:** \* P1, 1x2 LC, p2, ssp, p2tog, p2, 1x2 RC, p1; rep from \* to end – 12 (14) sts dec'd, 84 (98) sts rem.

**Rnd 5:** \* P1, k3, p1, k1, p2, k1, p1, k3, p1; rep from \* to end.

**Rnd 6:** \* P1, k3, p6, k3, p1; rep from \* to end.

**Rnd 7:** \* P1, 1x2 LC, p1, ssp, p2tog, p1, 1x2 RC, p1; rep from \* to end – 12 (14) sts dec'd, 72 (84) sts rem.

**Rnd 8:** \* P1, k3, p4, k3, p1; rep from \* to end.

**Rnd 9:** Rep Rnd 8.

**Rnd 10:** \* P1, 1x2 LC, ssp, p2tog, 1x2 RC, p1; rep from \* to end – 12 (14) sts dec'd, 60 (70) sts rem.

**Rnd 11:** \* P1, k3, p2, k3, p1; rep from \* to end.

**Rnd 12:** \* P1, k1, k2tog, p2, ssk, k1, p1; rep from \* to end – 12 (14) sts dec'd, 48 (56) sts rem.

**Rnd 13:** \* P1, LT, p2, RT, p1; rep from \* to end.

**Rnd 14:** \* P1, k2tog, p2, ssk, p1; rep from \* to end – 12 (14) sts dec'd, 36 (42) sts rem.

**Rnd 15:** \* P2tog, p2, ssp; rep from \* to end – 12 (14) sts dec'd, 24 (28) sts rem.

**Rnd 16:** \* P2tog, ssp; rep from \* to end – 12 (14) sts dec'd, 12 (14) sts rem.

Break yarn leaving approx. 8" tail. Thread tail through rem live sts, pull taut to close.

## FINISHING

Gently wash and block to finished measurements. Weave in ends.

## Abbreviations

<b>approx</b>	approximately
<b>circ</b>	circular
<b>cn</b>	cable needle
<b>dec('d)</b>	decrease(d)
<b>dpn(s)</b>	double pointed needle(s)
<b>est'd</b>	established
<b>k</b>	knit
<b>k2tog</b>	knit 2 stitches together (1 st dec'd)
<b>LC</b>	left cross
<b>LH</b>	left hand
<b>m</b>	marker
<b>meas</b>	measures
<b>ndl</b>	needle
<b>p</b>	purl
<b>p2tog</b>	purl 2 sts together (1 st dec'd)
<b>patt</b>	pattern
<b>pm</b>	place marker
<b>RC</b>	right cross
<b>rem</b>	remain(ing)
<b>rep</b>	repeat
<b>RH</b>	right hand
<b>rnd</b>	round
<b>ssk</b>	slip next 2 sts individually knitwise, slip them back to left needle in this position, knit them together through the back loops (1 st dec'd)
<b>ssp</b>	slip next 2 sts individually knitwise, slip them back to left needle in this position, purl them together through the back loops (1 st dec'd)
<b>st(s)</b>	stitch(es)

*Knit. Relax. Smile. Repeat!*

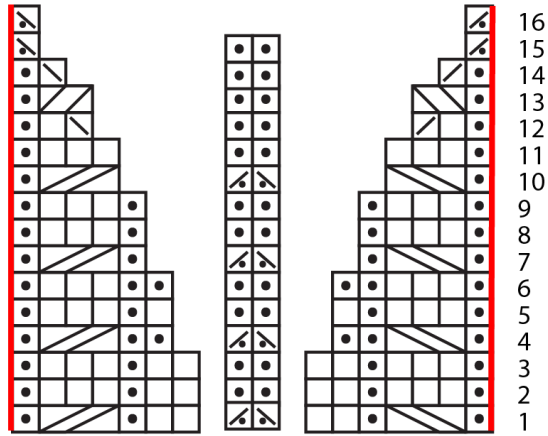
2019 © Universal Yarn, Inc.

All rights reserved.

[www.universalyarn.com](http://www.universalyarn.com)

This pattern may not be reproduced for business, trade or sale.

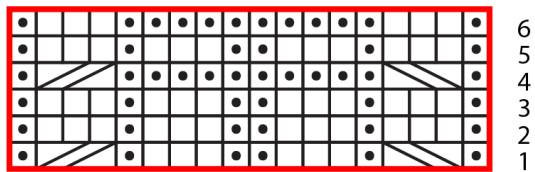
### Crown Shaping



### Key

- pattern repeat
- knit
- purl
- / ssp
- \ p2tog
- / ssk
- / k2tog
- / LT
- \ RT
- / 1x2 LC
- \ 1x2 RC

### Texture



### Rib



*Knit. Relax. Smile. Repeat!*

2019 © Universal Yarn, Inc.

All rights reserved.

[www.universalyarn.com](http://www.universalyarn.com)

This pattern may not be reproduced for business, trade or sale.